



WESTMINSTER

Second Quarter
2024 Addendum
to the

*City of Westminster Standards
and Specifications for the Design
and Construction of Public
Improvements*

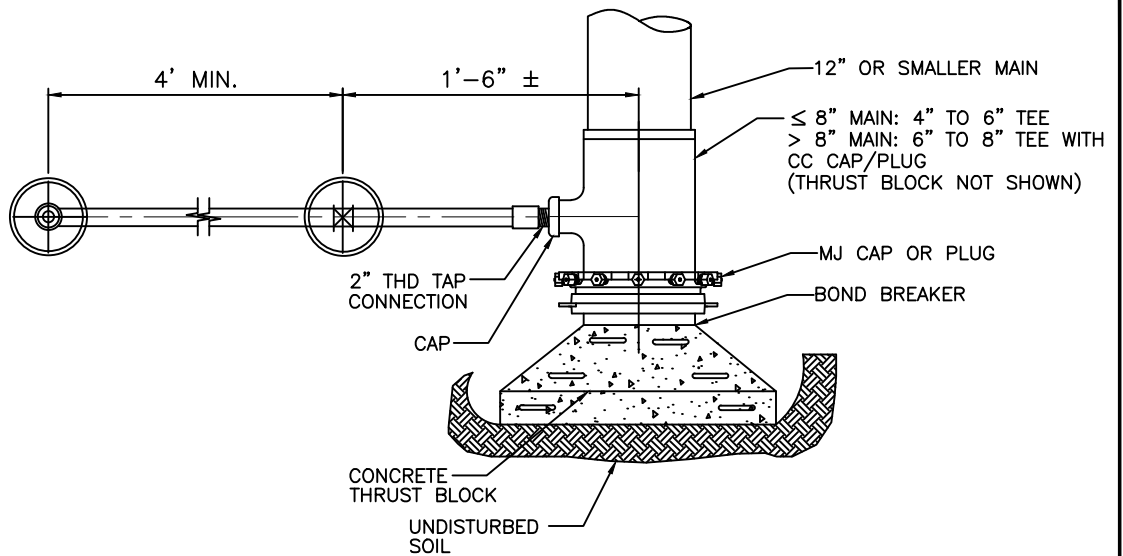
The effective date of this addendum is
August 8, 2024

Revision to Chapter 3
WATER SYSTEM

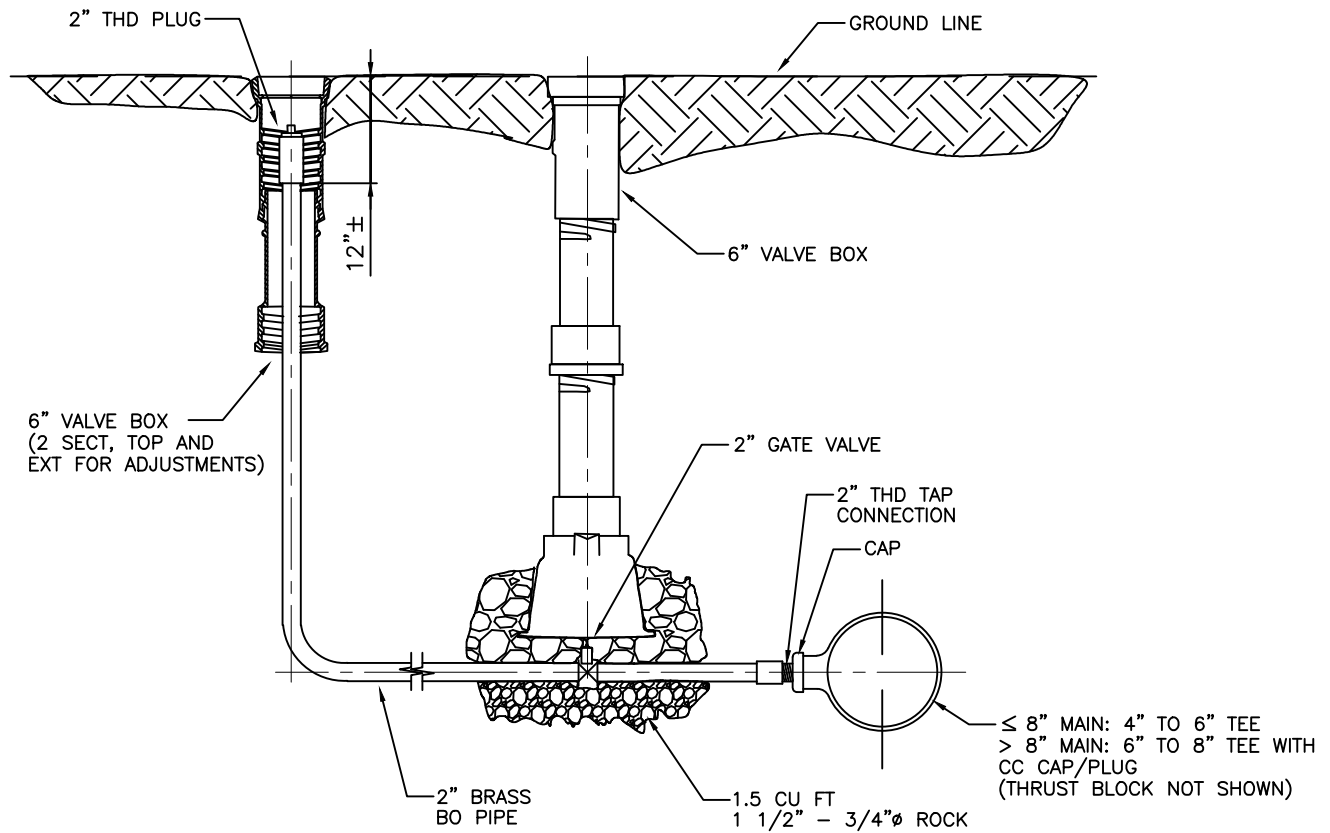
Section 3.56.00, first paragraph is hereby deleted and replaced with the following:

3.56.00 **BLOW-OFFS**

For host pipes 12" in diameter and below, blow-offs shall consist of a 2" threaded CC, a 2" gate valve, a 2" blow off pipe, and a blow-off assembly approved by the CITY. Refer to the detail drawing in the appendix of this chapter. On a dead end main, a reducer down to 4-6" and a Tee with a 2" female IPT shall be installed. With a 1' 6" brass IPT to a 2" gate valve and a minimum of 4' IPT brass to a 90-degree fitting and a standpipe no less than 12" from the ground surface.



PLAN



ELEVATION

NOTES:

1. MAINLINE CAP OR PLUG SHALL BE MECHANICALLY RESTRAINED.
2. REQUIRED AT ALL FUTURE STUB-OUT INSTALLATIONS.

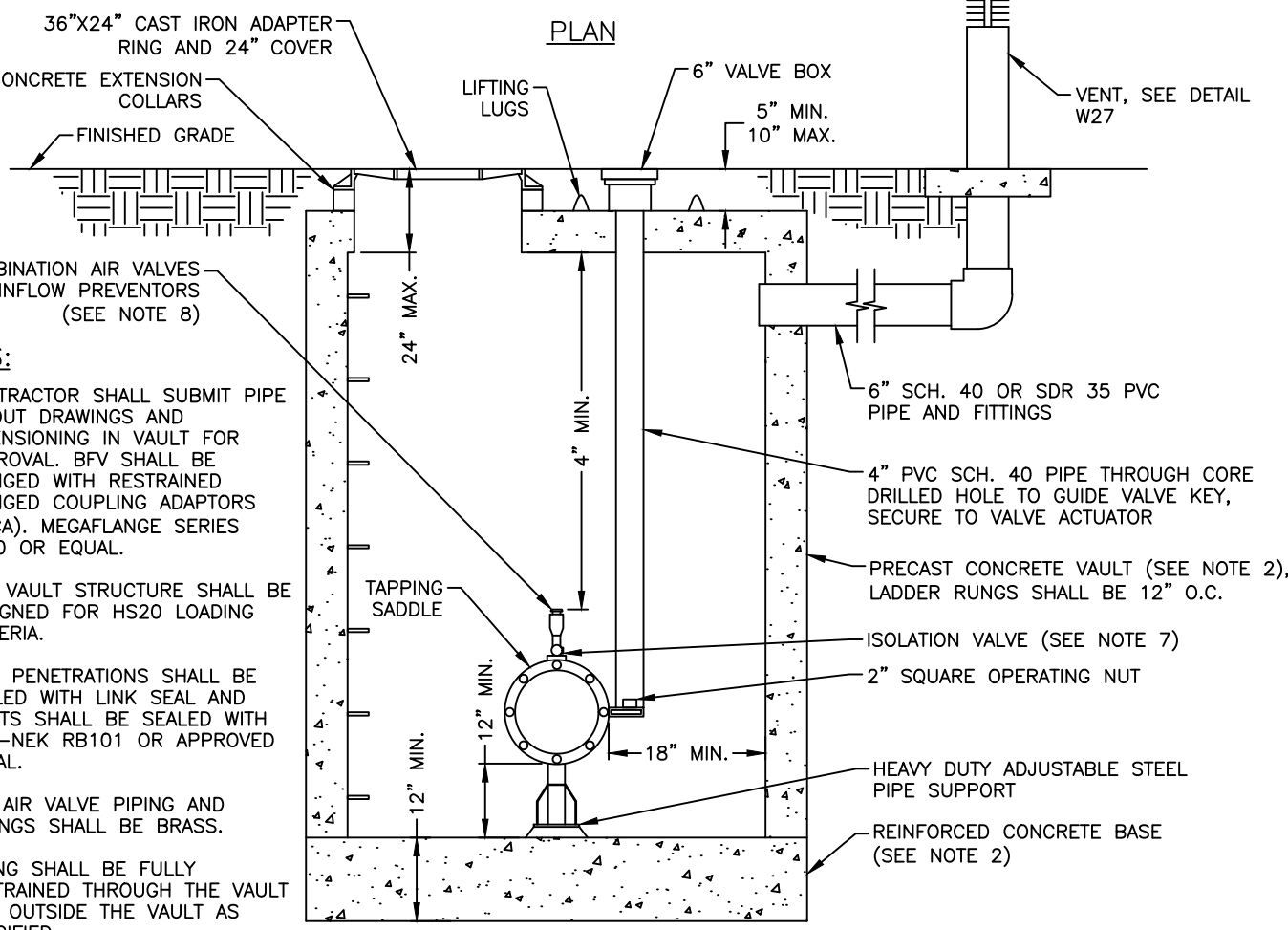
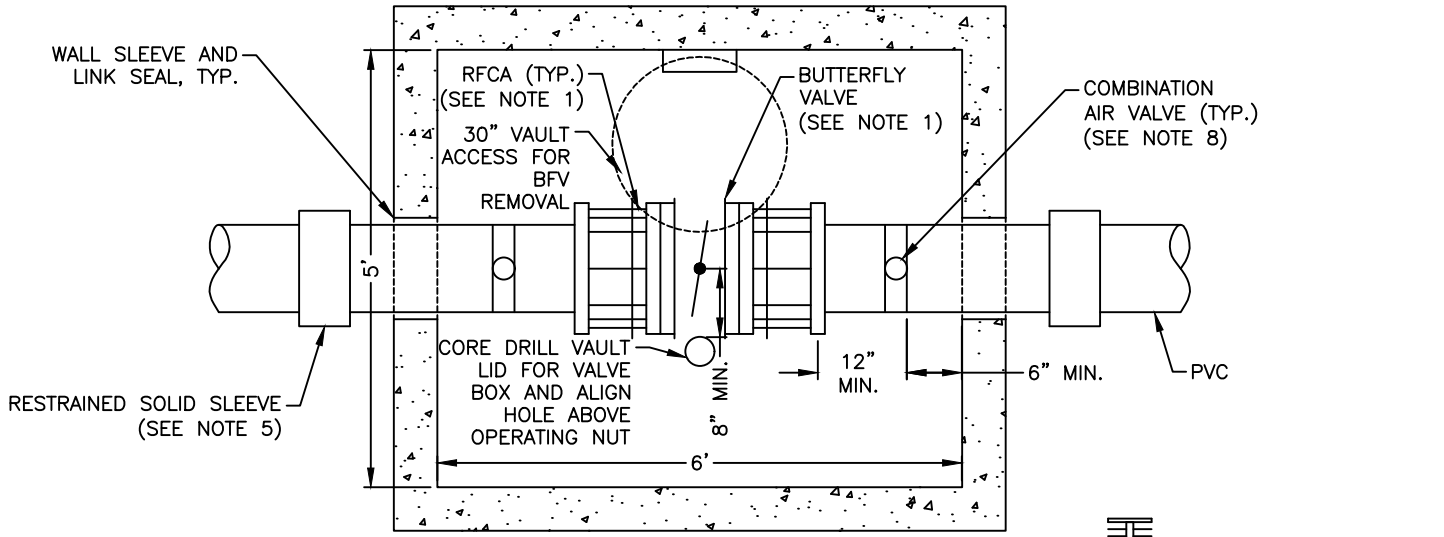


CITY of WESTMINSTER
4800 WEST 92ND AVENUE
WESTMINSTER, COLO. 80031

STANDARD BLOWOFF ASSEMBLY
12" AND SMALLER WATERLINES

DATE: JUNE 2024


SHEET W15



NOTES:

1. CONTRACTOR SHALL SUBMIT PIPE LAYOUT DRAWINGS AND DIMENSIONING IN VAULT FOR APPROVAL. BFV SHALL BE FLANGED WITH RESTRAINED FLANGED COUPLING ADAPTORS (RFLCA). MEGAFLANGE SERIES 2100 OR EQUAL.
2. THE VAULT STRUCTURE SHALL BE DESIGNED FOR HS20 LOADING CRITERIA.
3. PIPE PENETRATIONS SHALL BE SEALED WITH LINK SEAL AND JOINTS SHALL BE SEALED WITH RAM-NEK RB101 OR APPROVED EQUAL.
4. ALL AIR VALVE PIPING AND FITTINGS SHALL BE BRASS.
5. PIPING SHALL BE FULLY RESTRAINED THROUGH THE VAULT AND OUTSIDE THE VAULT AS SPECIFIED.
6. COAT THE EXTERIOR OF THE VAULT WITH BITUMASTIC 300M DAMP PROOFING OR APPROVED EQUAL.
7. ISOLATION VALVES SHALL BE FULL PORT BRONZE BALL STYLE WITH HAND LEVER. TWO INCH VALVES SHALL BE CORPORATION TYPE AND THREE INCH AND LARGER VALVES SHALL HAVE A FLANGE ADAPTOR IN THE OUTLET SIDE TO MATE WITH FLANGED AIR VALVES.
8. 2" COMBINATION AIR VALVES TYPICAL. LARGER AIR VALVES MAY BE REQUIRED BY THE CITY ENGINEER.

SECTION

	<p>CITY of WESTMINSTER 4800 WEST 92ND AVENUE WESTMINSTER, COLO. 80031</p>	<p>BUTTERFLY VALVE VAULT</p>	
		<p>DATE: JUNE 2024</p>	<p>SHEET W29</p>